

Key Features:

- External type dipole antenna
- 5.8GHz of frequency
- N-YPTPE Plug Stright interface Plastic rod of black
- IP67
- RoHS compliance

Applications

- 5.8GHz Wireless Communication
- WLAN device, WLAN Router, e.g., AP, PIC Wireless Card



Product Description

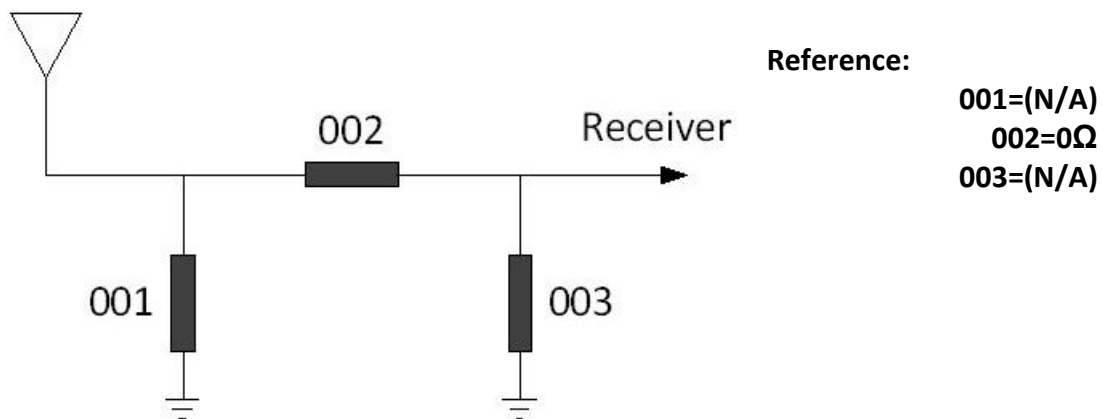
This miniature antenna is designed for 5.8GHz ,applications and can be easily built-in portable devices with N-TYPE processes. It has excellent ,stability and sensitivity to consistently provide high signal reception efficiency.

General Data

Electrical	
Frequency range	5.15~5.85GHz
Gain(dBi)	5.55GHz@7.0dBi
Polarization	Vertical & Horizontal
Impedance with Matching	50 Ω
Antenna Type	N-TYPEPLUGStright
V.S.W.R	≤2.0
Mechanical	
Dimensions(HxWxD)	L200X φ21(mm)
Weight	15g
Environmental	
Storage temperature	-10℃~+70℃
Operating temperature	-10℃~+60℃

Product Description

➤Recommend Matching Circuit



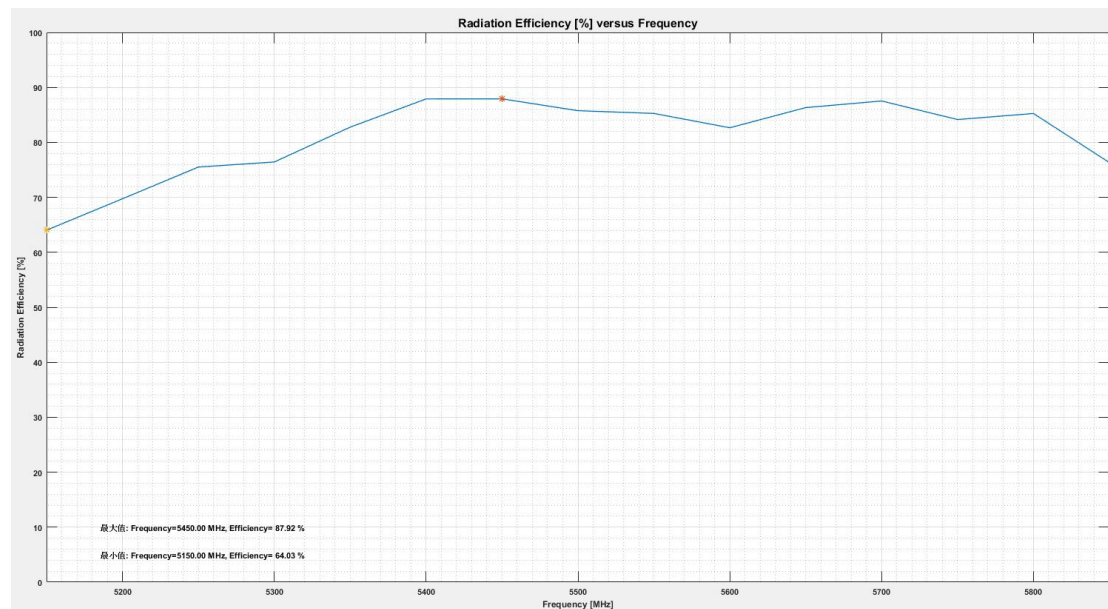
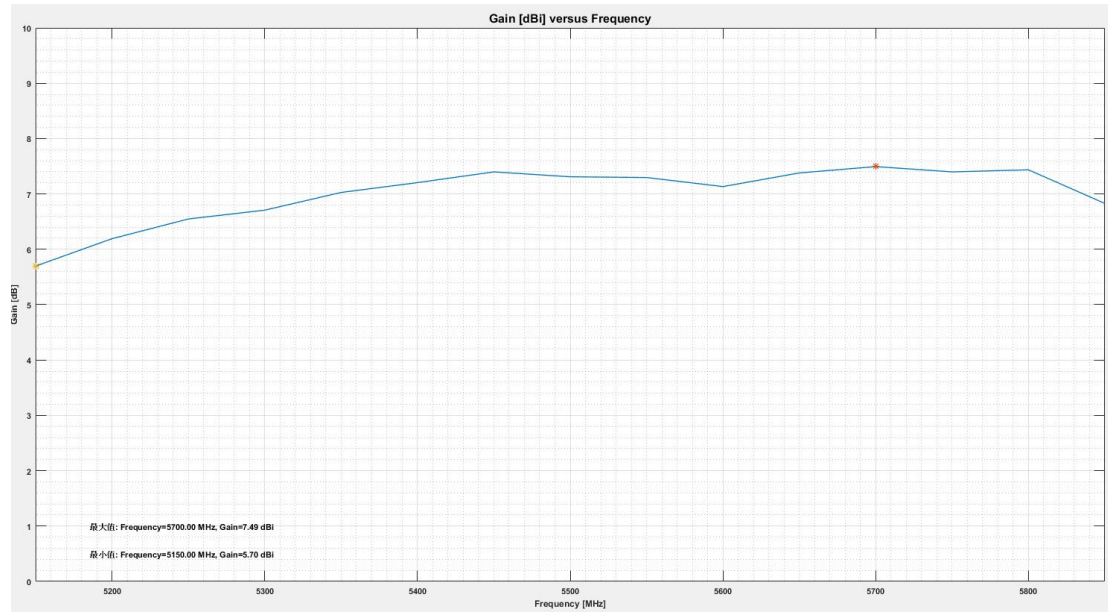
➤Return loss、VSWR& Smith chart

➤Efficiency (%)&Gain (dBi)

Copyright© Soant Communication Equipent Co.,Ltd.

Ver. 1.0

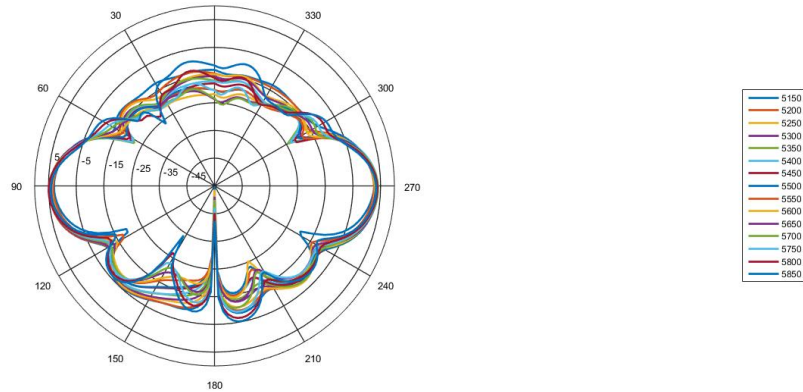
	5150	5200	5250	5300	5350	5400	5450	5500	5550	5600	5650	5700	5750	5800	5850
	7.6325	7.7562	7.7672	7.8742	7.8478	7.7643	7.9576	7.9764	7.9888	7.9598	8.0178	8.0723	8.1473	8.1286	8.0015
	5.6963	6.1912	6.5475	6.7071	7.0268	7.2045	7.3983	7.3097	7.2966	7.1328	7.3793	7.494	7.3981	7.4358	6.8281
	-1.9363	-1.565	-1.2198	-1.1672	-0.8209	-0.5598	-0.5593	-0.6667	-0.6922	-0.8269	-0.6385	-0.5783	-0.7492	-0.6928	-1.1734
	64.0285	69.743	75.5136	76.4333	82.7764	87.9057	87.9169	85.7699	85.2665	82.662	86.3276	87.5324	84.1554	85.2555	76.3242



phi90°

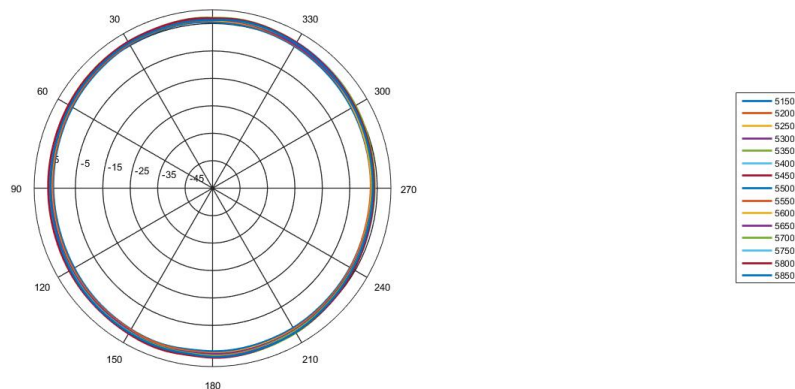
Copyright© SoantCommunication Equipent Co.,Ltd.

Ver. 1.0



Frequency (MHz)	Max (dB)	Max0deg	Min (dB)	Min0 deg	Max-Min (dB)	Roundness (dB)	DW_3dB (deg)	DW_center (deg)	DW_10dB (deg)	F2B_0 (dB)	F2B_30 (dB)	F2B_1PD_30 (dB)	F2B_60 (dB)	1PD_0 (dB)
5150	3.0299	90	-47.9764	-180	51.0063	25.5031	23.8404	90.0519	41.9660	0.3426	0.3426	0.3426	0.3426	34.0194
5200	3.3456	92	-48.7446	180	52.0002	26.0451	24.4456	91.1474	42.7724	0.3309	0.3309	0.3309	0.3309	29.4269
5250	3.8085	92	-48.1856	180	51.5741	25.9870	24.4589	91.9312	42.7837	1.0690	0.8539	0.8539	0.8539	28.6524
5300	4.0241	92	-51.6990	180	55.7230	27.8615	24.5130	92.1301	42.8514	1.0053	0.8104	0.8104	0.8104	28.2814
5350	4.3583	92	-51.6603	-180	56.0186	28.0093	24.1832	92.4583	42.7612	1.3363	1.0183	1.0183	1.0183	28.5218
5400	4.5035	92	-51.5684	180	56.0698	28.0349	24.4177	92.4901	43.1317	0.8129	0.3854	0.3854	0.3854	27.3160
5450	4.7490	92	-51.1912	180	55.9403	27.9701	24.0265	92.4038	42.7702	1.2473	0.9553	0.9553	0.9553	26.5089
5500	4.5604	92	-54.8632	180	59.4296	29.7116	23.9446	46.2099	42.9783	1.2121	0.9318	0.9318	0.9318	26.2623
5550	4.8657	92	-51.5147	180	56.1803	28.0902	23.8456	46.1822	42.8950	1.0802	0.8191	0.8191	0.8191	25.2271
5600	4.4676	92	-53.6851	180	58.1727	29.0864	23.2811	46.1599	42.2433	1.2894	0.9659	0.9659	0.9659	24.7715
5650	4.6107	92	-51.0928	180	55.7035	27.8517	23.6345	46.1387	42.6192	0.9600	0.7110	0.7110	0.7110	23.4400
5700	4.8534	92	-49.9524	180	54.8058	27.4029	22.5898	46.0764	41.0503	1.0279	0.7878	0.7878	0.7878	22.8312
5750	4.6968	92	-47.1508	180	51.8475	25.9238	22.2233	46.0742	41.0648	1.2137	0.9397	0.9397	0.9397	21.8317
5800	4.9939	92	-45.2147	180	50.2086	25.1043	21.2577	46.1152	39.6578	1.3794	1.1318	1.1318	1.1318	20.1038
5850	4.2165	92	-42.3316	180	45.5483	23.2741	20.8047	46.1459	39.9021	1.0476	0.7499	0.7499	0.7499	18.7545

theta90°

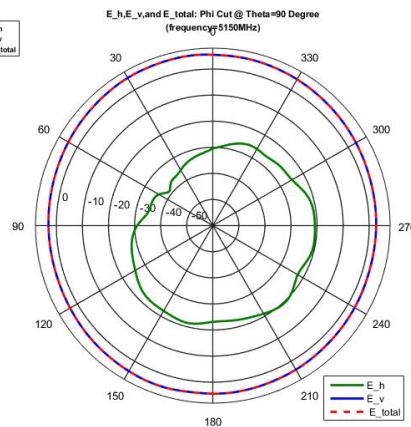
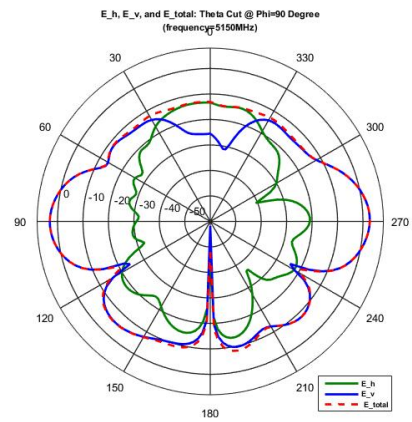
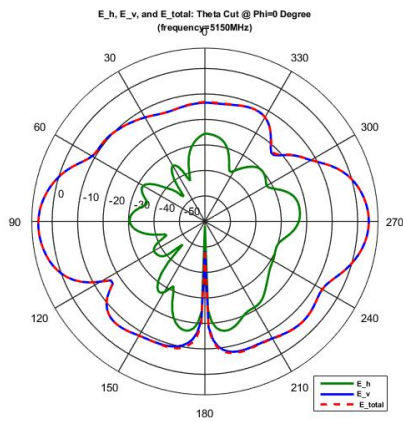
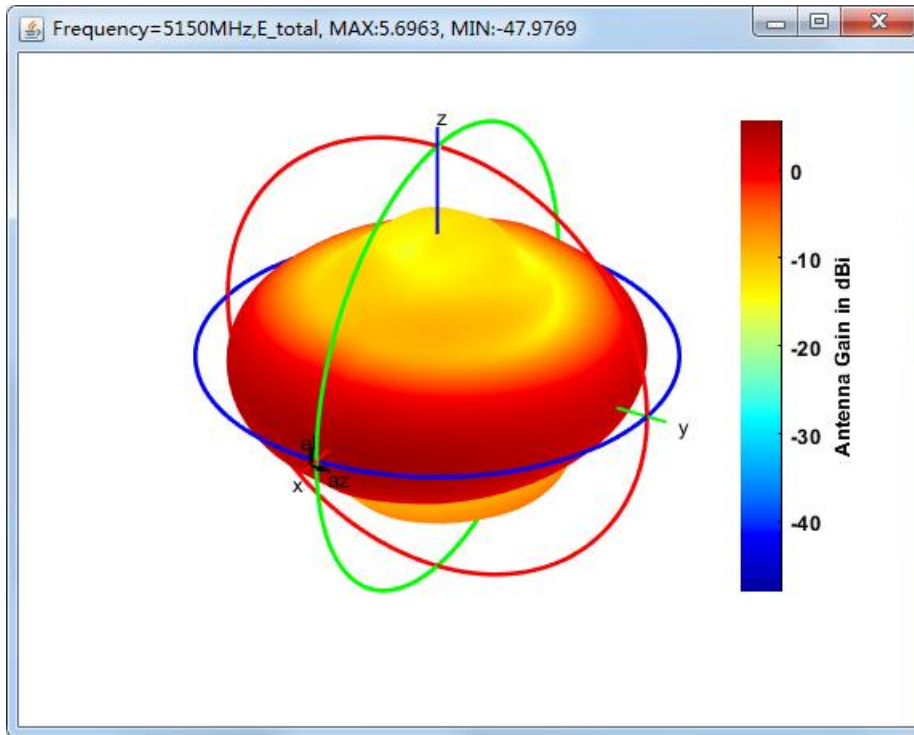


Frequency (MHz)	Max (dB)	Max0deg	Min (dB)	Min0 deg	Max-Min (dB)	Roundness (dB)	Avg_Gain (dB)	DW_3dB (deg)	DW_center (deg)	DW_10dB (deg)	F2B_0 (dB)	F2B_30 (dB)	F2B_1PD_30 (dB)	F2B_60 (dB)
5150	5.6963	8	2.5289	-104.0000	3.1673	1.5837	4.0186	335.4070	78.3927	NaN	1.3376	0.9759	0.9759	0.9759
5200	6.1285	6	2.4969	-102	3.6296	1.8148	4.3684	311.1734	82.3920	NaN	1.0719	1.0507	1.0507	1.0507
5250	6.4225	6	2.8191	-100	3.6033	1.8017	4.7147	307.8667	85.1473	NaN	1.3293	0.9747	0.9747	0.9747
5300	6.5671	6	3.0496	-102	3.5185	1.7592	4.8367	312.8024	80.4807	NaN	1.1636	0.9831	0.9831	0.9831
5350	6.8302	6	3.2095	-96.0000	3.6208	1.8104	5.1805	306.8580	83.5727	NaN	0.8437	0.8072	0.8072	0.8072
5400	6.9939	8	4.0295	-100	2.9644	1.4822	5.4936	NaN	NaN	NaN	0.8627	0.7456	0.7456	0.7456
5450	7.1710	6	3.6067	-102	3.5642	1.7821	5.5338	310.1908	79.5890	NaN	0.7860	0.7634	0.7634	0.7634
5500	7.0789	6	3.5607	-90	3.5181	1.7591	5.4309	308.0380	87.7426	NaN	0.8545	0.7909	0.7909	0.7909
5550	7.0365	6	3.6825	-102	3.3440	1.6720	5.4502	321.4944	81.5166	NaN	0.8591	0.7543	0.7543	0.7543
5600	6.8895	6	3.3917	-98.0000	3.4978	1.7489	5.3494	312.5088	84.4705	NaN	0.9125	0.8842	0.8842	0.8842
5650	7.1078	6	3.7068	-100	3.3411	1.6705	5.5832	319.8835	83.7196	NaN	0.7102	0.6636	0.6636	0.6636
5700	7.2529	-8	3.9046	-102	3.3482	1.6741	5.7329	322.7028	79.9114	NaN	1.0295	0.4912	0.4912	0.4912
5750	7.0915	6	3.6988	-96	3.3917	1.6959	5.5887	314.0587	85.2166	NaN	0.4755	0.4634	0.4634	0.4634
5800	7.0944	6	3.8195	-96	3.2749	1.6375	5.6852	324.5550	86.3398	NaN	0.3068	0.2739	0.2739	0.2739
5850	6.6965	-12	3.3904	-98.0000	3.3061	1.6530	5.2059	321.6071	85.2538	NaN	0.7374	0.1987	0.1987	0.1987

Copyright© Soant Communication Equipent Co.,Ltd.
Ver. 1.0

➤ Gain (dBi)

Frequency = 5150 MHz

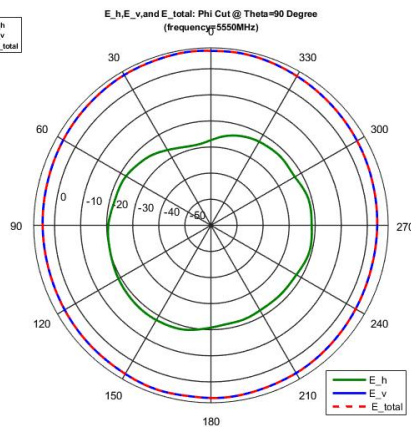
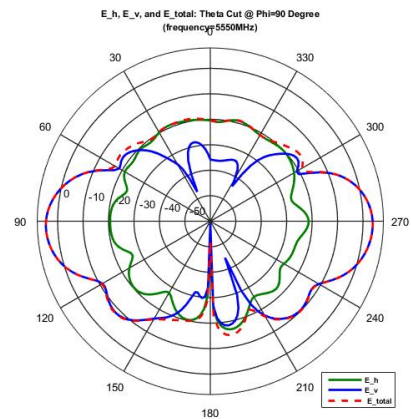
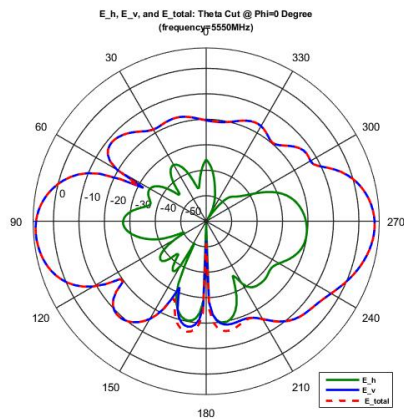
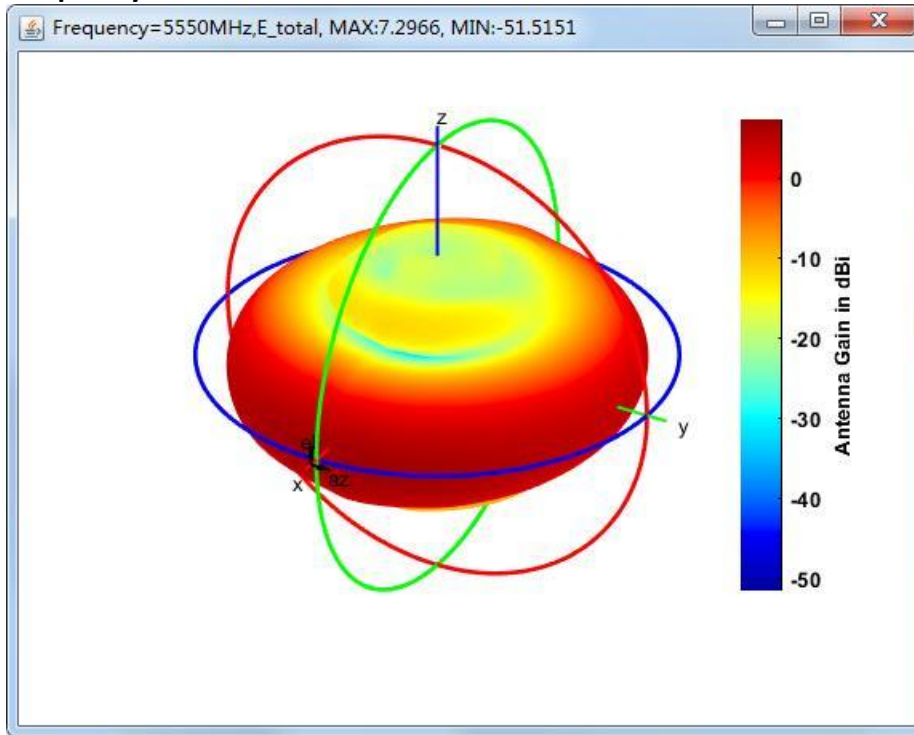


Copyright© Soant Communication Equipent Co.,Ltd.

Ver. 1.0

➤ Gain (dBi)

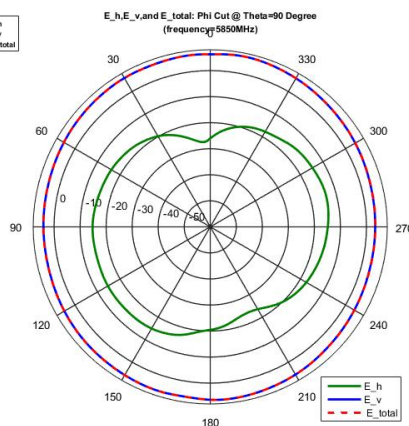
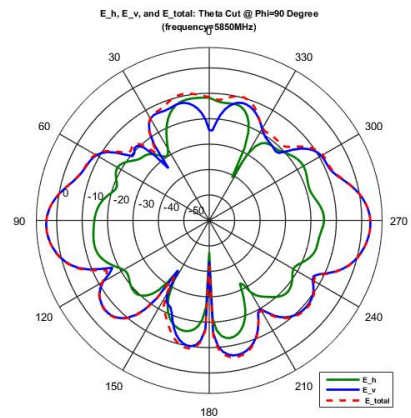
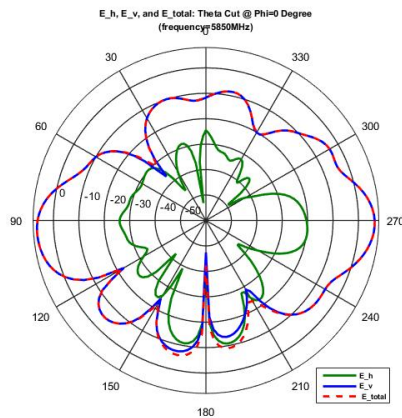
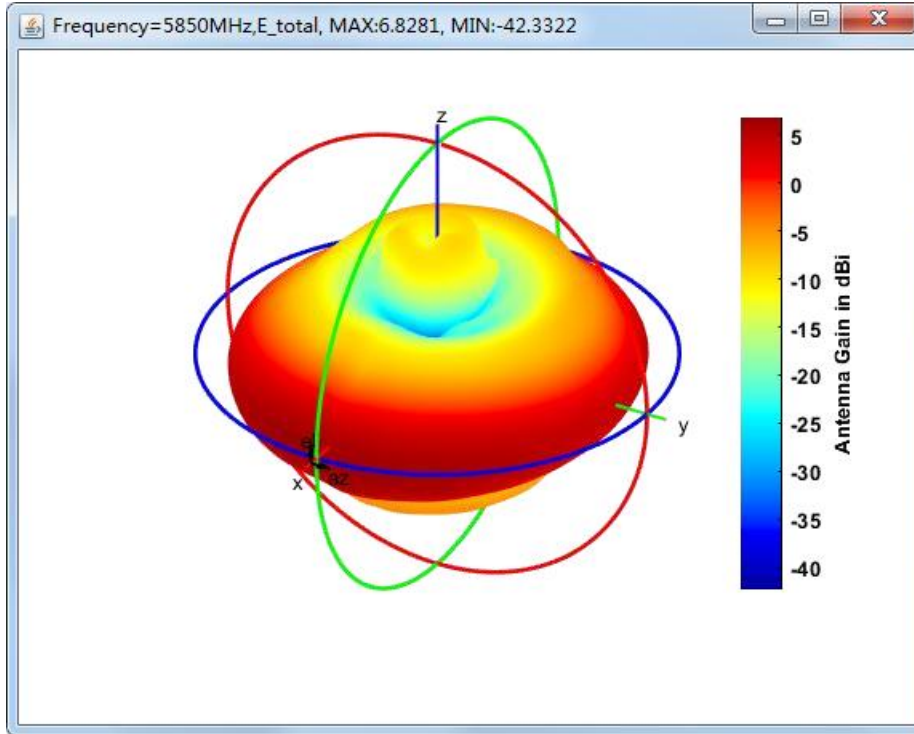
Frequency = 5550 MHz



Copyright© Soant Communication Equipent Co.,Ltd.
Ver. 1.0

➤ Gain (dBi)

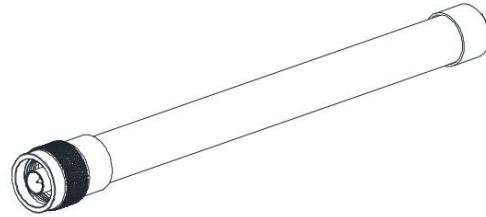
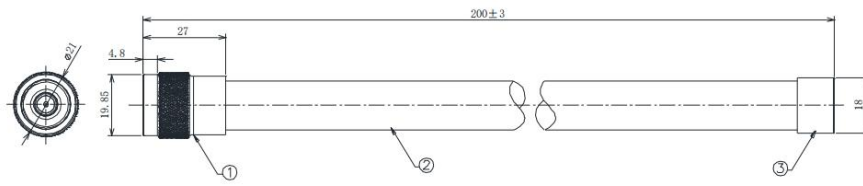
Frequency = 5850 MHz



Copyright© Soant Communication Equipment Co.,Ltd.

Ver. 1.0

Dimension



SPECIFICATION

1. Frequency Range: 5.15~5.85GHz
2. Impedance: 50Ω
3. VSWR: ≤2.0
4. Polarization: Vertical
5. Radiation: Omni
6. Gain: 7dBi

③	CAP	Aluminium: H8*φ18mm	1PCS	
②	Fiberglass tube	L150*φ16mm: White	1PCS	
①	CONNECTOR	N-TYPE PLUG, FOR ANTENNA	1PCS	
NO	PARTNAME	DESCRIPTION	Q'TY	Part P/NO